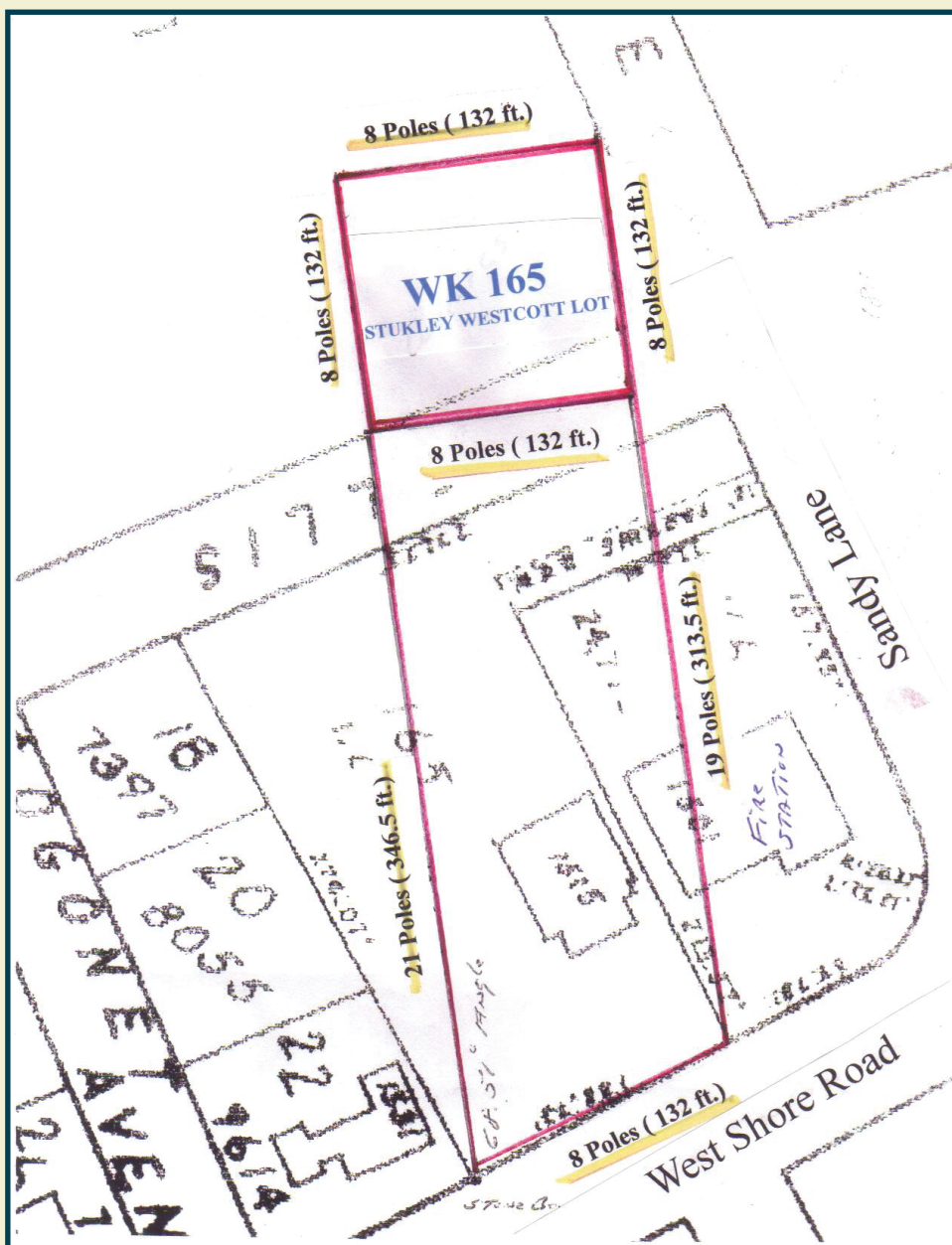
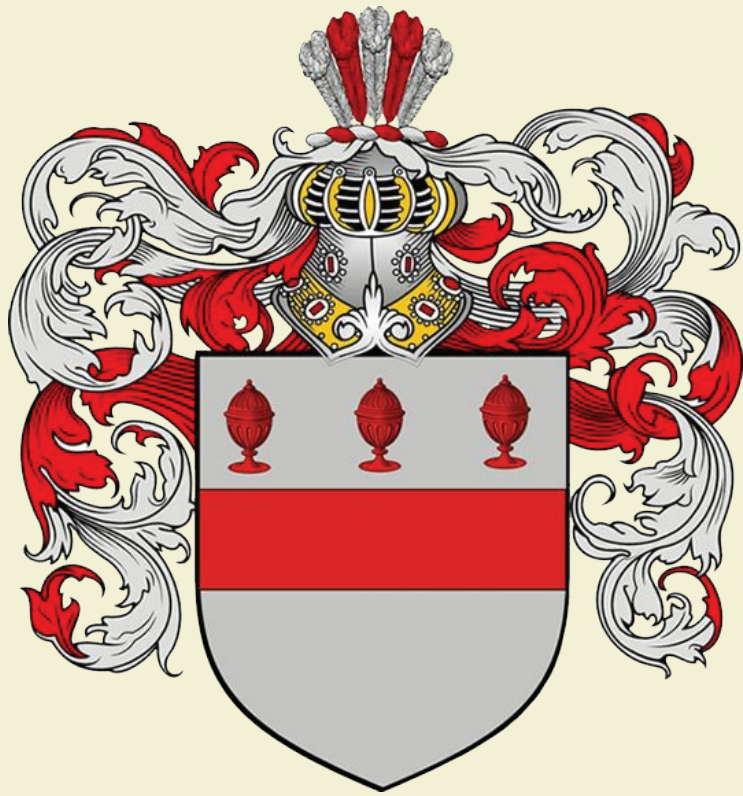


WESTCOTT CEMETERY WK165

AKA The School Master's Lot



Original layout of the cemetery site

At a Town meeting on February 20, 1663, Stukely Westcott was designated a member of a group of citizens to survey and lay out the property for a local blacksmith, a Town House, and the first public burial ground in Warwick.

In his book “Warwick, Rhode Island Historical Cemeteries,” published in 1997, John Sterling lists lost cemetery A18 as the School Master Lot. After nearly a year of researching old maps and documents provided by the Westcott family and in coordination with the Warwick Historical Society, Warwick’s lost cemetery A18 was found by members of the Warwick Commission on Historical Cemeteries in 2014. Renumbered as Warwick Historical Cemetery #165, the cemetery was officially dedicated 351 years after being laid out.

In Oliver Payton Fuller’s book “History of Warwick,” Fuller states, “One of the old places [burial ground] now [1875] nearly obliterated is about one hundred feet from the present school house. One of the graves was that of Mr. Emmett, who was a school teacher at the time of his death in 1727. Good substantial slate stones with suitable inscriptions marked the place of his interment” until time and vandalism destroyed them. In addition to the grave of Mr. Emmett are the graves of Stukely Westcott (1592-1677) and his wife Juliana Marchant (1591-1670) and perhaps others.

In an article written by Hon. J. Russell Bullock and published in the Narragansett Historical Register 1886, Bullock states “Mr. Amos Lockwood, a descendant in the seventh generation, living near the first public burial ground, and now [1886] seventy-eight years of age, well remembers when many tumuli (ancient burial mounds), eroded by time and marked by rough and uninscribed headstones, told of the place where the ancient sleepers rest; but now the ploughshare has obliterated all.”



Donated by Friends of the Warwick Commission on Historical Cemeteries and the Warwick Historical Society, 2022
