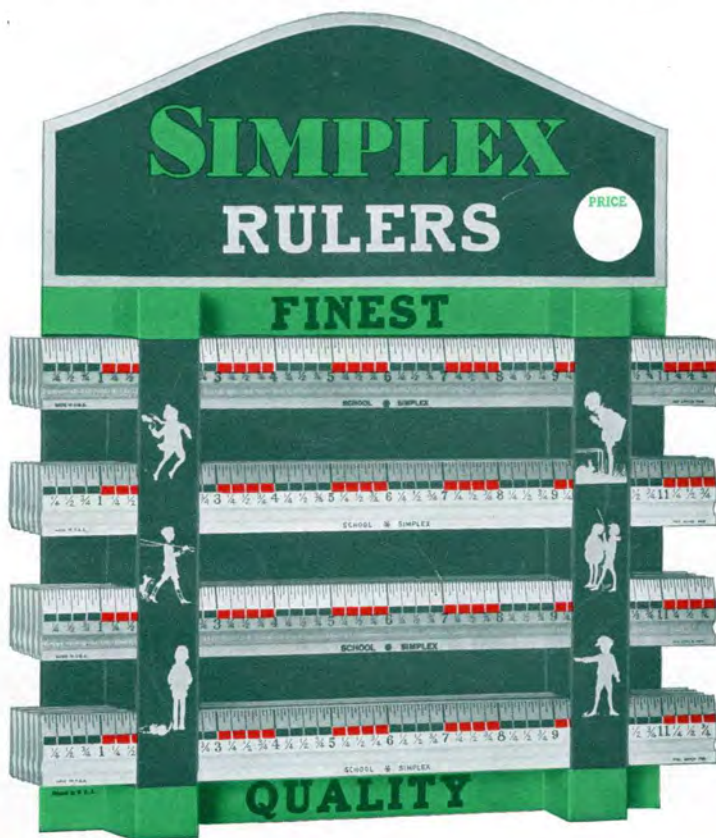


Westcott Rule Company Inc.

Seneca Falls, N. Y.

Manufacturers of
Arrow Brand, Strateline and Simplex Rulers



Vest Pocket

:-: Desk

Work Basket

No. 100-6" 6" long, $\frac{7}{8}$ " wide, $\frac{1}{16}$ " thick, One Brass Edge, 1 Green Celluloid Edge. Red & Black Simplex Scaling on both sides. Packed 2 Doz. on Display Card.



White Bevel and Plain Simplex



No. 177. Twelve inch, Hard Maple, varnished, brass edge, groove and white enamel bevel. Packed two dozen on a display card.

The School Simplex is an Entirely New and Different Ruler

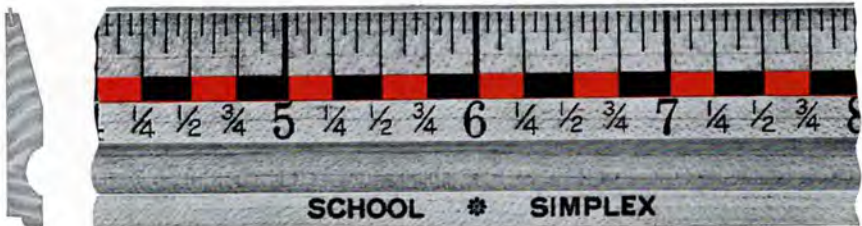


Twelve Inch for Boards of Education and School Bids

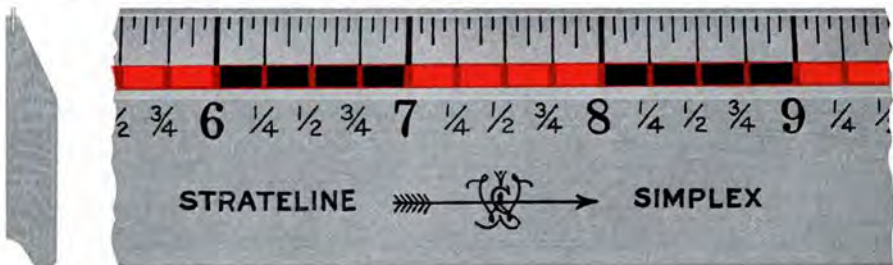
- Scaled in such a manner as to immediately impress upon the scholar the major divisions of the inch.
- So numbered as to make possible the instantaneous determination of any part of one foot.
- The inch terminals are so heavily emphasized as to make their location positive.
- The scaling of this ruler will allow of its use by most all grades.
- The attractive color combination is a welcome improvement over rulers of the past.

Packed three dozen to box.

No. 160. Plain Edge. No. 166. Same as above, but brass edge.



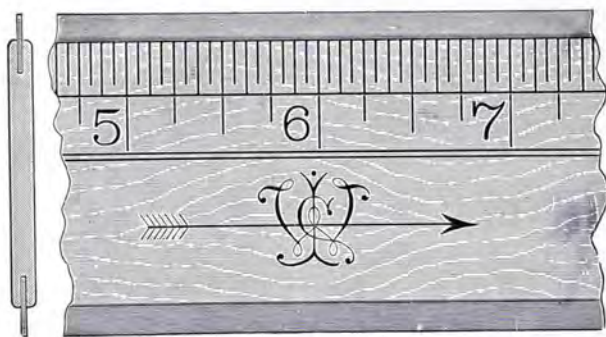
No. 170. Grooved ruler with brass edge and two color simplex scaling. Packed two dozen on a display card.



No. 200 Hard Maple varnished ruler showing Simplex Red and Black Scaling. Brass Edge. $1\frac{5}{16}$ inches wide, $\frac{9}{32}$ inch thick. Made in 15 inch length. Packed individually 1 dozen to box; if assorted with No. 800, packed $\frac{1}{2}$ dozen each on display card.

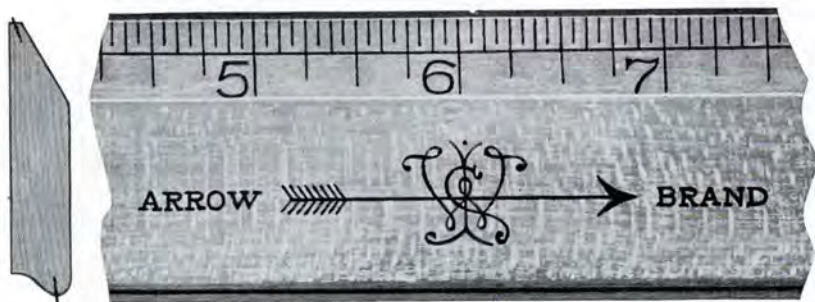
Illustrations are full size

High Grade Desk Rulers



No. 1733. Rich Mahogany color, hand rubbed, dull finish. One white and one green transparent celluloid edge. Scaled in sixteenths on both sides. Hole in end. $1\frac{3}{8}$ inches wide, $\frac{1}{8}$ inch thick. Full width including edges two inches.

Packed 1 dozen in a box. Each ruler in an envelope.



No. 76. Selected Maple, Finely Varnished, Boxwood Color. Scaled in sixteenths. $1\frac{1}{8}$ inch wide, $\frac{3}{8}$ inch thick. Made in 12 inch, 15 inch, 18 inch and 24 inch lengths.

No. 79. Same as above with double steel edges.

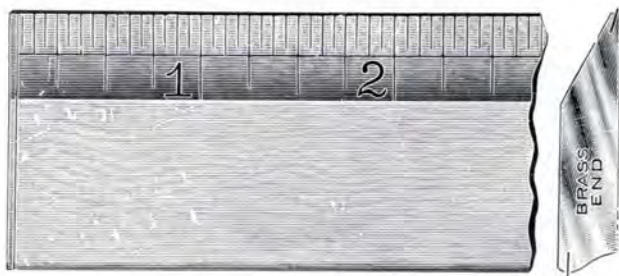
No. 94. Same as No. 76, except finished with three coats of varnish, hand rubbed and polished.

No. 99. Same as No. 94, except with double steel edge.

One dozen in a box, 5 gross in a case. Case weights as follows:

12 inch, 100 lbs. 15 inch, 125 lbs. 18 inch, 150 lbs. 24 inch, 200 lbs.

High Grade Brass End Desk Rulers

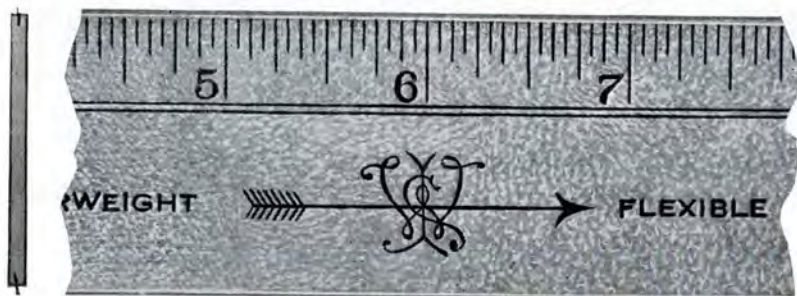


- No. 579. Selected Maple, Finely Varnished, Boxwood Color. Scaled in sixteenths, $1\frac{5}{16}$ inch wide, $\frac{3}{32}$ inch thick, 2 steel edges.

Fitted with our patented Brass End Plates which hold securely in place the Steel Edges and also entirely prevents the corners of the bevel from breaking. Packed 1 dozen in new shape handsome box, 4 wide and 3 deep, faced up.

- No. 599. Same as above except finished with three coats of varnish, hand rubbed and polished.

The Featherweight Flexible Rulers



- No. 912. Made of carefully selected Rock Maple, Hand Rubbed, Piano Finish, Boxwood Color. $1\frac{5}{16}$ inch wide, $\frac{1}{16}$ inch thick. Packed 1 dozen in a box, each ruler in an envelope, double steel edges. Made in 12 inch, 15 inch, 18 inch and 24 inch lengths. The perfect Ruler for particular people.

- No. 789. Same as above, except 1 coat of varnish, gloss finish.

Softwood School Ruler



No. 47. $1\frac{1}{16}$ inches wide, $\frac{1}{8}$ inch thick, 12 inches long; two scales, one in millimeters and one in eighths.

Basswood, Smoothly Finished. Natural Wood Color. Packed one gross in a box, fifty gross in a case, weight 250 lbs.

Hardwood School Rulers



No. 126. $\frac{7}{8}$ inch wide, $\frac{1}{8}$ inch thick, 12 inches long; two scales, one in millimeters and one in eighths. One brass edge, nicely varnished.

No. 122. Same as above, except plain edge.



No. 131. $\frac{7}{8}$ inch wide, $\frac{1}{8}$ inch thick, 12 inches long, beveled edge ruler scaled in sixteenths on bevel. Nicely varnished.

No. 130. Scaled in eighths.

No. 132. Scaled in halves.

No. 134. Scaled in quarters.

No. 130-1 Scaled in inches.

Hardwood School Rulers



Extra Quality Selected Maple, Nicely Varnished, all $\frac{7}{8}$ inch wide, $\frac{3}{8}$ inch thick, 12 inches long and furnished in 5 different divisions of the inch as listed below. For Board of Education use.

No. 150. Scaled in sixteenths on bevel. No. 154. Scaled in quarters on bevel.

No. 158. Scaled in eighths on bevel. No. 152. Scaled in halves on bevel.

No. 151. Scaled in inches on bevel.

Packed 3 dozen in a box, 25 gross in a case, weight 200 lbs.



No. 141. $1\frac{1}{8}$ inches wide, $\frac{1}{8}$ inch thick, 12 inches long, scaled with inch and metric divisions.

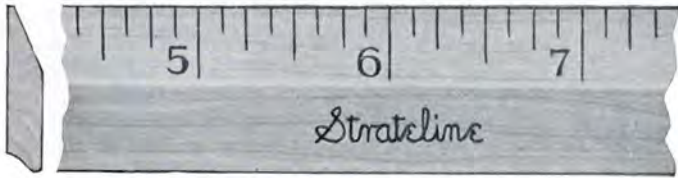
The increasing use of the metric system makes this a most popular ruler in this and foreign countries. Packed 2 dozen on a display card.

No. 146. Same as No. 141 except has single brass edge.



No. 168. $1\frac{1}{8}$ inches wide, $\frac{3}{8}$ inch thick, 12 inches long, scaled in eighths on bevel, with metric scale on opposite edge. Packed 2 dozen in a box, 25 gross in a case, weight 250 lbs.

Hardwood School Rulers



- No. 156. $\frac{7}{8}$ inch wide, $\frac{1}{8}$ inch thick, 12 inches long, Brass Edge. Scale in sixteenths or eighths on bevel. Packed 2 dozen in a box, 5 gross in a case, weight 40 lbs.



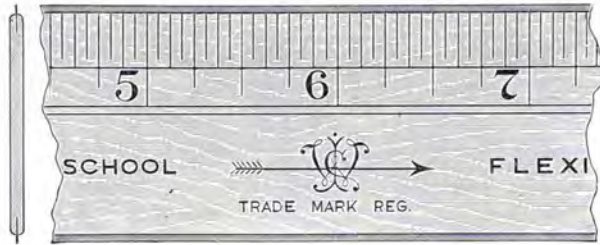
- No. 186. $1\frac{1}{8}$ inches wide, $\frac{1}{8}$ inch thick, 12 inches long. Single Brass Edge. Double bevel, sixteenth and millimeter scales with protractor on back, grooved top. Packed 2 dozen on a display card.
- No. 185. Same as No. 186 except has Plain Edge.



- No. 176. $1\frac{1}{8}$ inches wide, $\frac{1}{8}$ inch thick, 12 inches long. Brass Edge. Scale in sixteenths on bevel. Packed 2 dozen on a display card.
- No. 175. Same as No. 176 except has Plain Edge.

Hardwood Rulers

Selected Maple, Nicely Varnished



No. 777. $1\frac{1}{8}$ inches wide, and only $\frac{1}{16}$ inch thick, 12 inches long. Very flexible, double brass edges, ready for use either side up. Sixteenth scale on one side, millimeter scale on the other. Wrapped in packages of 1 dozen, 3 dozen in box.

No. 776. Same as No. 777, except has single brass edge.



No. 196. $1\frac{1}{8}$ inches wide, $\frac{1}{16}$ inch thick, 12 inches long, single Brass Edge. Double bevel, sixteenth and millimeter scales, protractor on back. Packed 1 dozen in a box, 10 gross in a case, weight 170 lbs.

No. 195. Same as No. 196 except has Plain Edge.

Hardwood Rulers



No. 1166. $1\frac{1}{4}$ inches wide, $\frac{1}{4}$ inch thick, 12 inches long, grooved top. Selected Maple, nicely varnished, natural color, single Brass Edge. Scaled in sixteenths on bevel. Packed 1 dozen in a box, 10 gross in a case, weight 140 lbs.

No. 1165. Same as 1166, except has Plain Edge.



Selected Maple, Finely Varnished, Natural Color. $1\frac{1}{8}$ inch wide, $\frac{3}{8}$ inch thick. Scaled in sixteenths. Made in 12 inch, 15 inch and 18 inch lengths.

No. 245. Plain Edge.

No. 249. Double Steel Edge.

No. 246. Single Brass Edge.

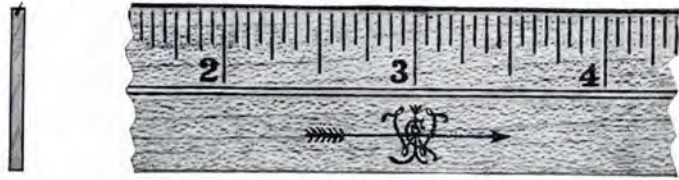
Packed 1 dozen in a box. Ten gross in a case. Case weights as follows:

12 inch, 180 lbs.

15 inch, 230 lbs.

18 inch, 280 lbs.

Six Inch Vest Pocket Rulers



- No. 1. Maple, nicely varnished, scaled in sixteenths on one side, metric on the other. Single Brass Edge.
- No. 1P. Maple, Hand Rubbed, scaled in sixteenths on one side, metric on the other. Double Steel Edges.
- No. 1B. Genuine Boxwood, Hand Rubbed, scaled in sixteenths on both sides. Double Steel Edges.

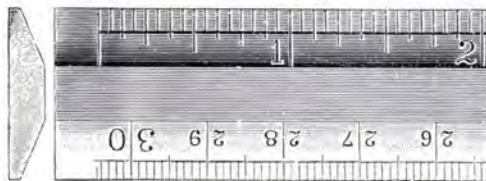
Packed 2 dozen in a box.

Scientific Apparatus Rulers



- No. 705. Maple, $\frac{3}{4}$ inch wide, $\frac{1}{8}$ inch thick, 12 inches long. Scaled in millimeters on bevel, sixteenths on back, Plain Edge.
- No. 9705. Same as No. 705 with hand rubbed finish, Boxwood color, Plain Edge.

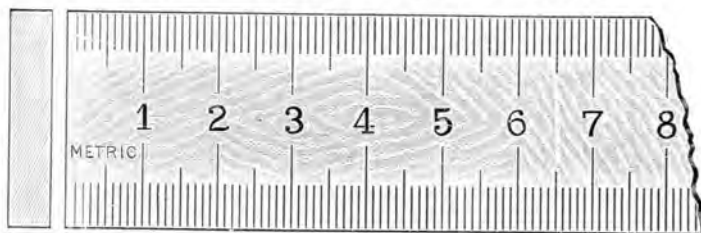
Packed 3 dozen in a box.



- No. 715. Maple, $\frac{7}{8}$ inch wide, $\frac{1}{8}$ inch thick, $12\frac{1}{2}$ inches long, double bevel. Scaled in sixteenths and millimeters. Plain Edge.
- No. 9715. Same as No. 715, but hand rubbed finish, Boxwood Color, Plain Edge.

Packed 3 dozen in a box.

Hard Maple Meter Sticks



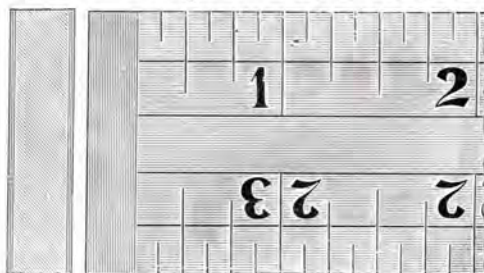
One side scaled in centimeters divided into millimeters on both edges. Other side having inch scale divided in eighths. Standard size, 1 inch wide, $\frac{1}{16}$ inch thick, 100 centimeters long. Boxwood finish.

No. 13. Plain Ends.

No. 13B. Brass Bound Ends.

Packed 1 dozen in a package, weight per gross about 40 lbs.

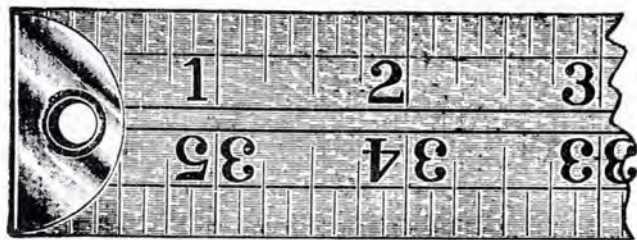
Hard Maple Yard Sticks



Double Scales divided into eighths and running in opposite directions on both sides.

No. 18. $1\frac{1}{8}$ inch wide, $\frac{3}{8}$ inch thick, Plain Ends.

No. 18B. $1\frac{1}{8}$ inch wide, $\frac{3}{8}$ inch thick, Brass Bound Ends.



Double Scales divided into eighths and running in opposite directions on one side. Eighths of yard divisions on the other side. Packed 1 dozen in a package, weight per gross about 35 lbs.

No. 16. $1\frac{1}{8}$ inch wide, $\frac{1}{4}$ inch thick, Plain Ends.

No. 16B. $1\frac{1}{8}$ inch wide, $\frac{1}{4}$ inch thick, Brass Eyelet Ends.

No. 8. Soft Wood Yard Sticks, Natural Color, Scaled same as on Maple, $1\frac{1}{8}$ inch wide, $\frac{3}{8}$ inch thick. Packed 3 dozen in a box.



No. 84. A big, sturdy, almost unbreakable school ruler built and scaled so as to carry the school child through several grades of ruler use.

Four different and separate scales are shown on this one ruler —

SIXTEENTHS · EIGHTHS · QUARTERS · HALVES
which answer the requirements of the child for any grade.

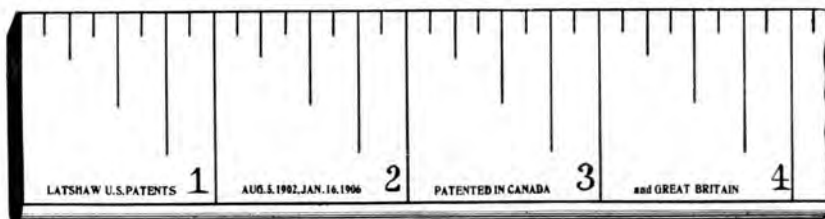
The ruler has two full sized pencil grooves and is beveled so that its scaled edges can be applied much closer to the work to be done than is possible with other rulers.



- Packed two dozen to handsome display box.
- Electros for your catalogue on request.
- Samples for your salesmen.

The Latshaw Educational Series Hardwood Latshaw Rulers

Selected Maple, Nicely Varnished



(Scale printed 1 inch wide)

- No. 3050. Scaled in sixteenths. No. 3052. Scaled in halves.
No. 3058. Scaled in eighths. No. 3051. Scaled in inches.
No. 3054. Scaled in quarters.

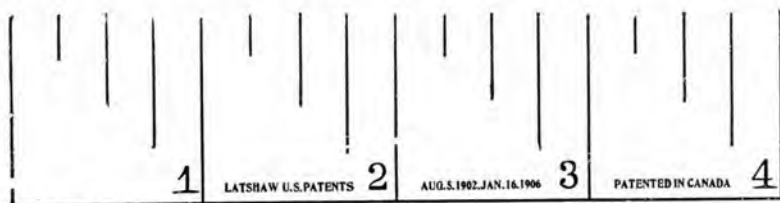
Packed $\frac{1}{2}$ gross in a box, 10 gross in a case, weight 70 lbs.

All $1\frac{1}{8}$ inches wide, $\frac{1}{8}$ inch thick, 12 inches long.

Latshaw Noiseless Fibre Rulers

WAX FINISH

Washable—Sanitary—Antiseptic

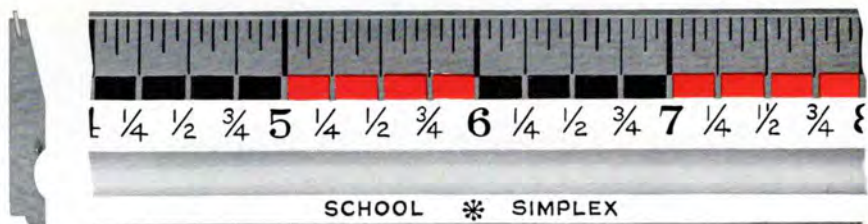


An inexpensive substitute for the wooden ruler, finished by a special process from a substantial fibre stock. While not as durable as the wooden ruler, yet possessing advantages, in that they are noiseless, flexible, washable, and they present the markings on a flat surface, close to the paper.

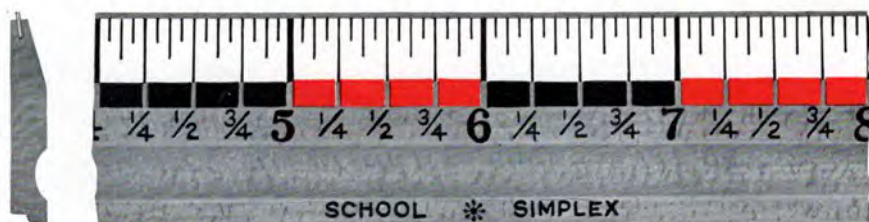
Light Orange Color, Printed in Black. Heavy tough check stock, $1\frac{1}{8}$ inches wide, 12 inches long.

- No. 4050. Scaled in sixteenths. No. 4052. Scaled in halves.
No. 4058. Scaled in eighths. No. 4051. Scaled in inches.
No. 4054. Scaled in quarters. Packed one gross in a box.

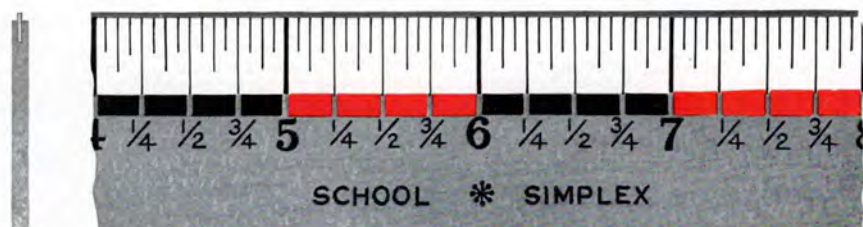
Outstanding Rulers For This Year



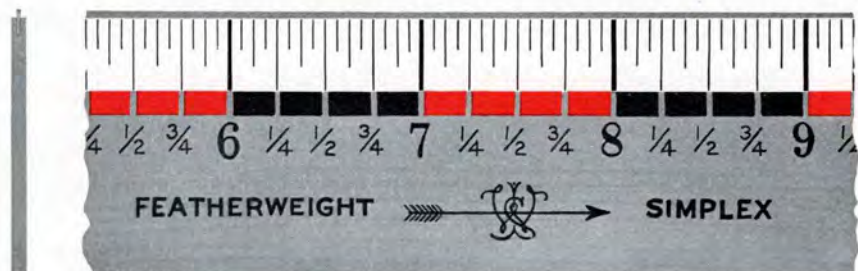
- No. 180. 12" long, $1\frac{1}{8}$ " wide, One Brass Edge, White Enamel Face with Red and Black Simplex Scaling on Bevel. Protractor on back, Pencil Groove in face. Packed 2 Doz. on a Display Card.



- No. 190. 12" long, $1\frac{1}{8}$ " wide, One Brass Edge, White Enamel Bevel with Red and Black Simplex Scaling. Protractor on back, Pencil Groove in face. Packed 2 doz. on a Display Card.



- No. 700. 12" long, $\frac{1}{16}$ " thick, $1\frac{1}{8}$ " wide, Flexible, One Brass Edge, White Enamel Bevel with Red and Black Simplex Scaling on one side. Protractor on back. Packed 2 doz. on Display Card.



- No. 800 Hard Maple varnished flexible ruler, $1\frac{5}{16}$ inches wide, $\frac{1}{16}$ inch thick. White Bevel and Red and Black Simplex Scaling, both sides. Packed 1 dozen in box individually or $\frac{1}{2}$ dozen each on display card if assorted with No. 200.

Illustrations are full size